

April 13, 2022

VIKINGS

*Hope Mills
Middle & OG
Night*



A few words from our Administrators

[EOG Tips Video](#)

[EOG With Gilas](#) Password: CwuDPBD3

STANDARDS FOR MATHEMATICAL PRACTICE

1
Make sense of problems and persevere in solving them.

2
Reason abstractly and quantitatively.

3
Construct viable arguments and critique the reasoning of others.

4
Model with mathematics.

5
Use appropriate tools strategically.

6
Attend to precision.

7
Look for and make use of structure.

8
Look for and express regularity in repeated reasoning.





TEAM WORK MAKES THE DREAM WORK!!!!

Encourage your child to study, read, and do their homework

Establish a daily routine

Express high expectations but realistic

Attend after school activities

Have your child teach you what they learned that day at school

Research Says

Students whose parents are involved

- Earn higher grades and test scores
- Get promoted to the next grade level
- Attend school regularly
- Have better social skills
- Show improved behavior



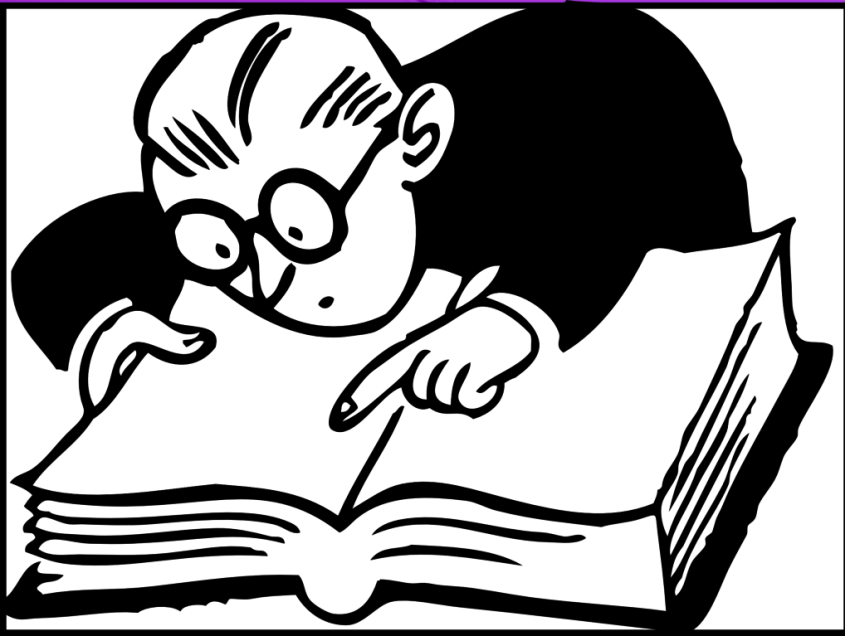
Write down formulas and other brain dump information on your scratch paper when testing session begins.

$$V = LWH$$

$$\frac{\text{Part.}}{\text{Whole}} = \frac{\%}{100}$$

$$\Delta A = \frac{BH}{2}$$

**READ EVERYTHING AND PAY
CLOSE ATTENTION TO DETAILS.**



**READ THE
QUESTIONS TWICE,
WRITE DOWN THE
IMPORTANT
DETAILS, WORDS
AND NUMBERS.
TAKE YOUR TIME.**

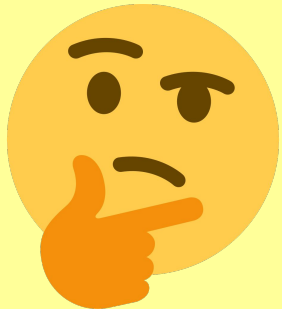
GO BACK



Answer easy questions first.

If you get to a question that completely stumps you, flag that question and create a "go back to" box on your scrap paper and move on. When you finish your test, go back to the hard questions.

Do not become upset or distracted by difficult questions. No one is expected to get all the answers correct. After a reasonable attempt at the questions, go on to other test items and then return to work on the difficult questions at the end of the test.





Use **ALL** of your time!!!!

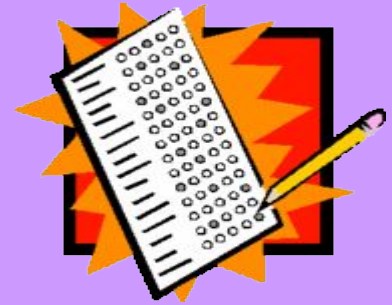
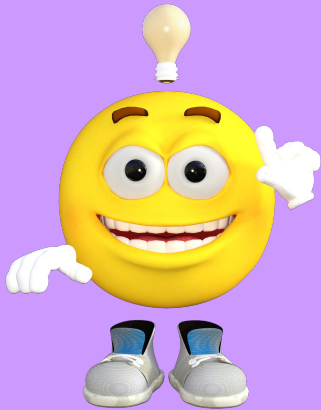
When you complete the last item on the test, go back through the test to make sure you didn't skip any questions. Then spend the rest of the testing time rereading and reworking the hardest problems. Look for careless mistakes.

REMEMBER

What does Ms. Freda ALWAYS say?

Unless they tell you to solve the problem a certain way, **USE THE WAY THAT WORKS BEST FOR YOU!**

Don't leave any questions blank!
Even if you feel clueless, you
have a 25% chance of
guessing correctly!



Trust your gut!

Your first answer is usually right. When you go back to reread or rework a problem, don't change your first answer unless you had made a careless mistake, your answer is not reasonable or you hadn't understood the question.

I believe in you, you should too



Keys to a Successful EOG



NCDPI EOG level Descriptors



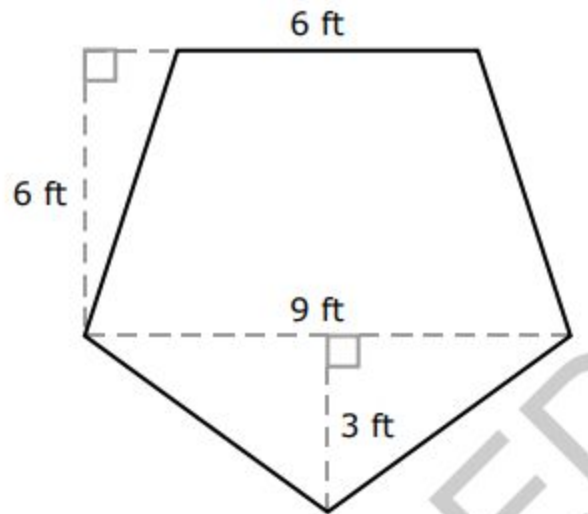
Test Specifications



Calculator Specifics (Active/Inactive)

2019 Released EOG

21 What is the area of the pentagon shown below?



- A 27 square feet
- B 58.5 square feet
- C 85.5 square feet
- D 117 square feet

EASER



THE
MATH
EOG WILL
BE MAY
12, 2022

